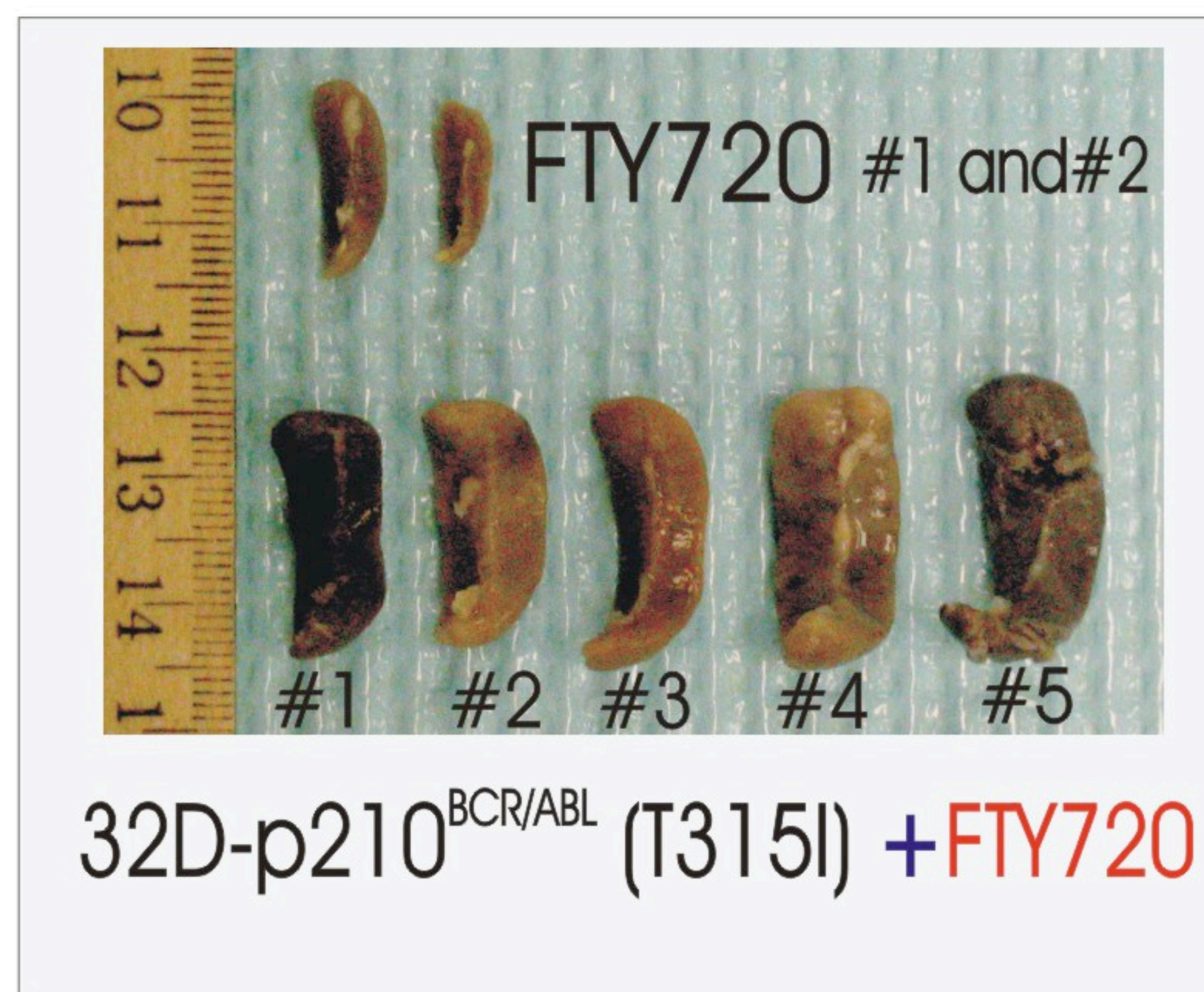
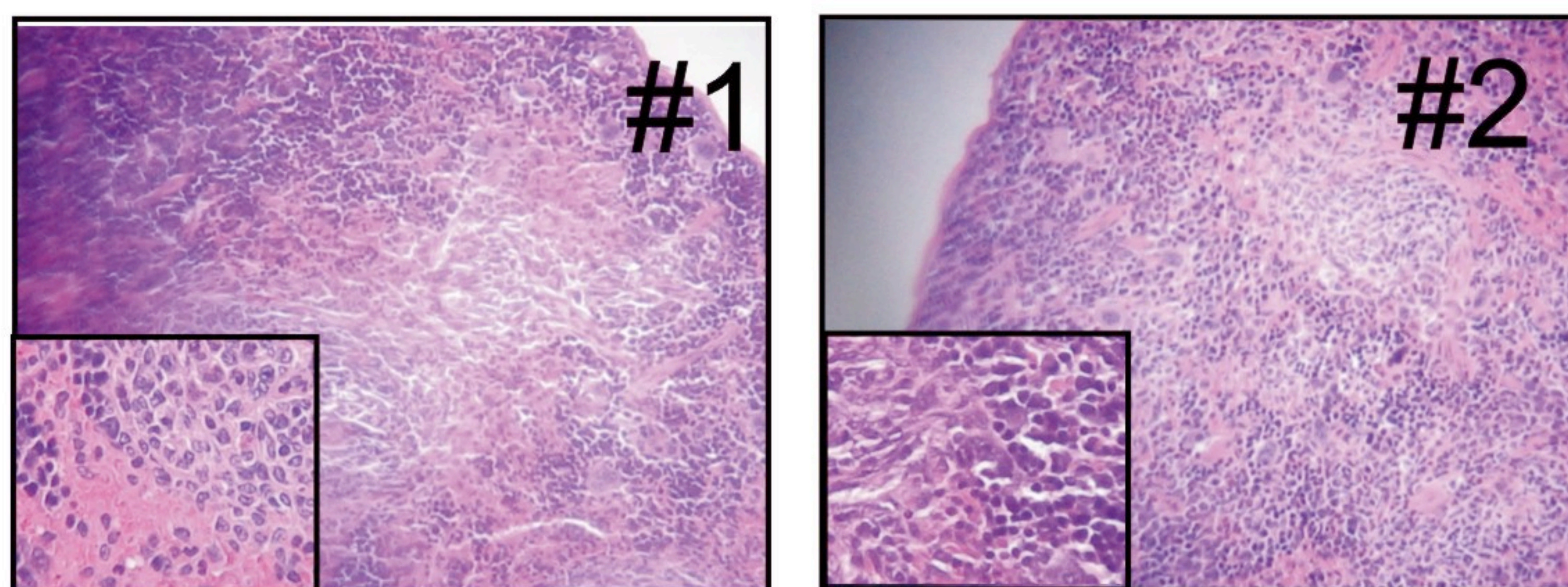


A

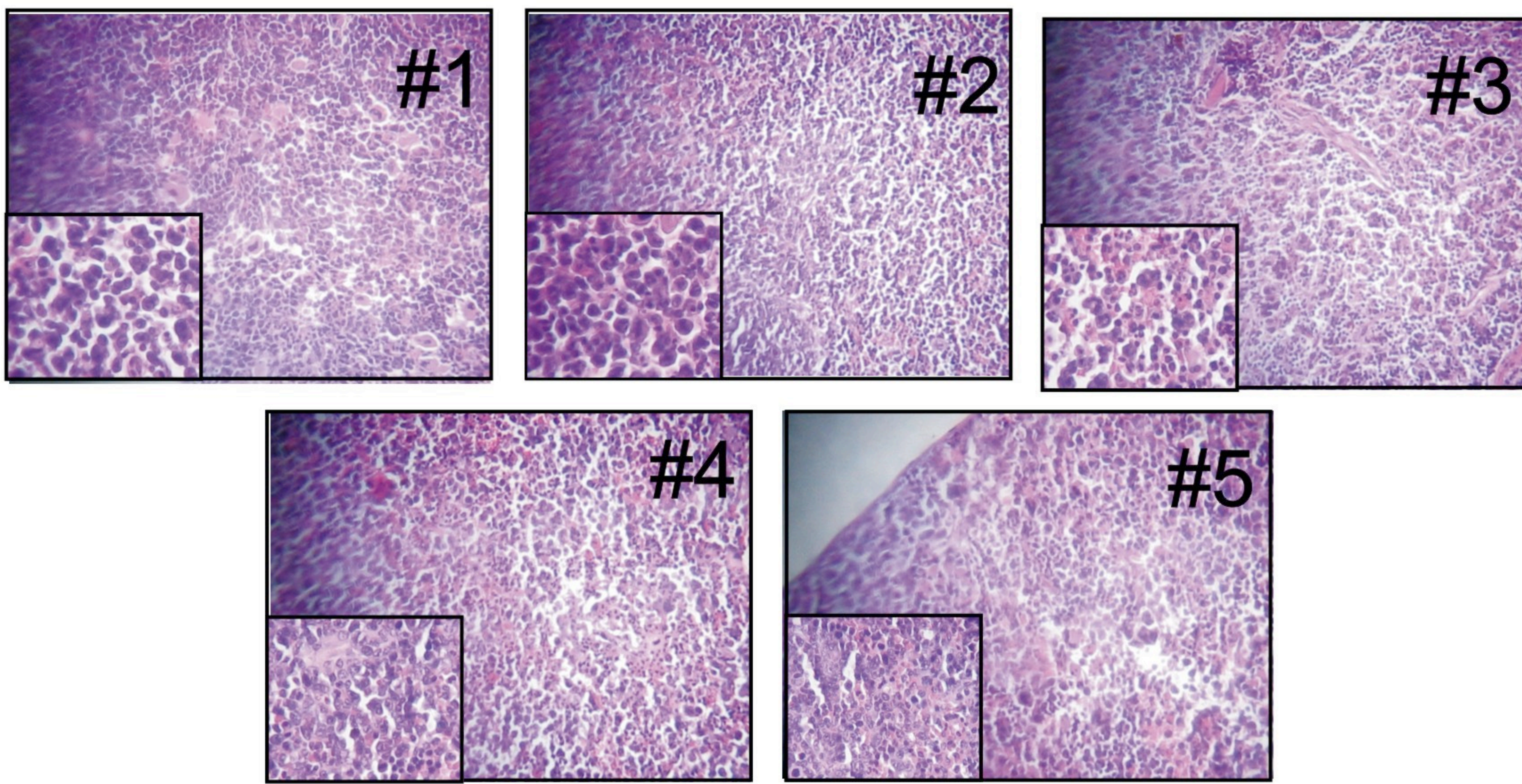


B

Controls +FTY720



32D-p210<sup>BCR/ABL</sup> (T315I) +FTY720  
( died between week 6-12)





**Supplemental Figure 1. *Histology of spleens from 32D-p210<sup>BCR/ABL</sup>(T315I) mice that died within weeks 6-12.*** Visual analysis of spleens (A) and H&E staining of spleen sections (25X magnification) (B) of FTY720-only mice sacrificed at week 27 and FTY720-treated 32D-p210<sup>BCR/ABL</sup>(T315I) mice that died within weeks 6-12. Insets (40X magnification) show normal parenchymal structure in drug-only treated mice while massive presence of infiltrating myeloid blasts is evident in 32D-p210<sup>BCR/ABL</sup>(T315I) cells-injected mice.